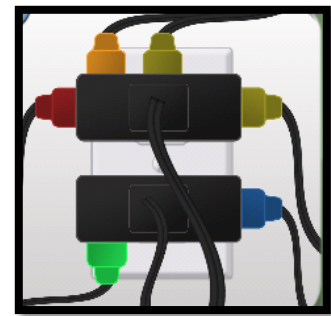


## Safety Scavenger Hunt!

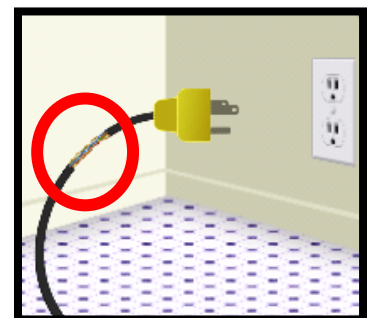
It is important to be safe with electricity. Be a Safety Hero and search around your home to make sure your family stays safe. Check each box after you find each item.

1. Look around your home for any overloaded outlets as shown in the picture to the right. It can get hot and cause an electrical fire. Be sure to tell an adult if you see this. Power strips or surge protectors are much safer to use!



2. Locate the fire extinguisher in your home. If you don't have a fire extinguisher, encourage your parents to buy one. You can buy an ABC fire extinguisher suitable for most homes for \$20-30 at most hardware stores. Be sure to use this instead of water if there is an electrical fire. Water is a conductor and will make the fire spread.

3. Check for frayed or ripped cords around your home. If you find any that don't look safe, ask an adult for help. It could hurt you or start a fire. *Suggestion: Use electrical tape to fix the cord.*



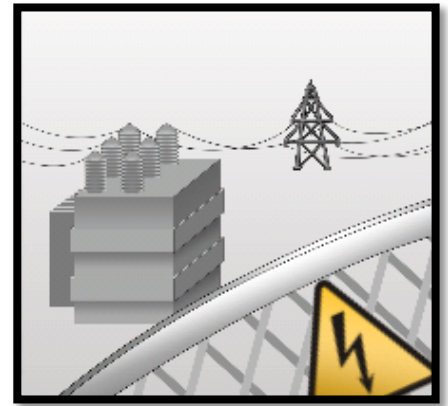
Providing energy education to students in the communities we serve.  
That's our Promise to Michigan.

---



4. If you have small siblings or babies around your home, make sure there aren't any objects lying around that they could put into an electrical outlet. **Suggestion: Buy the clear, plastic outlet plugs in the baby section that are made to cover up outlets for this reason.**

5. Search your neighborhood and/or surrounding area for a substation. The electricity comes from the power plant to the substations in your neighborhood. There is a fence around it. These are dangerous and you should never climb the fence or try to go inside.



6. Look outside and locate a transformer; it looks like a green box. You may have to walk down the street. Transformers are the last stop electricity makes before it enters the meter on your house. Transformers are always locked but you should never play around them!

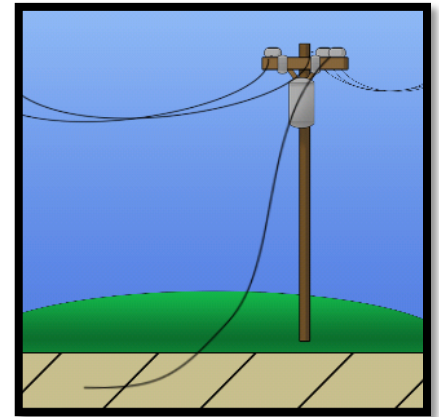
Providing energy education to students in the communities we serve.  
That's our Promise to Michigan.

---



7. Look around your house and locate the fuse box (also called a circuit breaker or electric panel). Ask an adult if you need help finding it. This controls the electricity for your house, but you should never play near it!

8. Sometimes storms, car accidents or wind can cause power lines to fall down. If you see a downed power line make sure to **STAY AWAY & STAY ALIVE**. You should always stay at least **25 feet** away from a downed power line. Using a tape measure or yardstick, measure out 25 feet so you can see how far away you need to be. *If you see a downed power line, call Consumers Energy or 911.*



9. Locate a safe place in your home that you could go during a storm. Discuss this with your family members. Make a storm safety kit to be prepared if the power goes out. *Suggestions for the storm safety kit: Flashlight & extra batteries, non-perishable food, snacks, water, battery-powered radio, cell phone, a list of emergency numbers, and a first aid kit. Make sure to check it once a year!*

