



Croton Dam Economic Contribution Study

June 9, 2023





**PUBLIC SECTOR
CONSULTANTS**

Prepared by

Public Sector Consultants
www.publicsectorconsultants.com

Prepared for

Consumers Energy
www.consumersenergy.com

Table of Contents

EXECUTIVE SUMMARY	4
Regional Economic and Employment Contributions	4
Property Value Analysis	5
BACKGROUND	6
CROTON DAM	7
ECONOMIC CONTRIBUTION ANALYSIS	7
PROPERTY VALUE IMPACTS	9
Assessed and Taxable Values	9
Hedonic Analysis	11
DAM REMOVAL SCENARIOS	12
CONCLUSION	13
REFERENCES	14
APPENDIX A. METHODOLOGY	15
APPENDIX B. ORGANIZATIONAL CONTACTS	19
APPENDIX C. MAP OF CROTON, HARDY, AND ROGERS DAMS	20

Executive Summary

Consumers Energy (Consumers) engaged Public Sector Consultants (PSC) to analyze the economic contributions of its 13 hydroelectric dams and their associated impoundments. This work complements PSC's ongoing efforts to assist Consumers in collecting feedback from individuals, organizations, and businesses that would be affected by dam decommissioning.

This economic contribution analysis differs from a related approach called economic impact analysis. While both approaches use the same models to simulate the economic effects of a resource, they differ in some basic assumptions. Economic contribution analyses are a current-state snapshot of the overall market and make no assumptions about future changes in the underlying economy. Rather, they measure the economy-wide effects of the current level of activity of a business or industry, or for this study, the activity generated from recreational assets. Economic impact analyses, on the other hand, are commonly used to measure the economic effect of a business or industry being added to, or lost from, the local economy. It accounts for the differences in economic activity that will result from the gain or loss.

Regional Economic and Employment Contributions

IMPLAN, a widely used, reputable economic modeling software, allows PSC to estimate the direct economic effects of pond visitor spending, as well as model supply chain purchases, worker spending, and other indirect effects the dam and impoundment have on the regional economy. For more information on IMPLAN methodology and terminology, please see Appendix A. Using IMPLAN, as well as data collected from local and state sources, PSC estimates that the Croton Dam Pond supports 29 jobs in the region and about \$1.27 million in value-added to the region's economy on an annual basis (Exhibit 1).

EXHIBIT 1. Economic Contribution Analysis Results

Contribution Type	Employment	Labor Income	Value-added
Direct	25	\$568,169	\$956,226
Indirect/induced	4	\$183,925	\$309,904
Total	29	\$752,094	\$1,266,130

Source: PSC analysis

The Croton Dam Pond recreational activity contributes to over \$375,000 in total annual tax revenue, with \$264,336 at the local, county, and state levels (Exhibit 2).

EXHIBIT 2. Tax Contributions

Contribution Type	Local	County	State	Federal	Total
Direct	\$61,982	\$18,571	\$144,422	\$78,664	\$303,639
Indirect/induced	\$10,269	\$3,077	\$26,015	\$32,562	\$71,923
Total	\$72,251	\$21,648	\$170,437	\$111,226	\$375,562

Source: PSC analysis

Property Value Analysis

PSC compiled assessed and taxable values from the Newaygo County Equalization Department for the tax (calendar) year 2022. Pond- and river-adjacent properties represent \$60.4 million of assessed value and \$51.09 million of taxable value. The total assessed value of adjacent properties represents 2.62 percent of total county-assessed value and 3.09 percent of the county’s taxable property (Exhibit 3).

EXHIBIT 3. Assessed and Taxable Values of Pond- and River-adjacent Properties (Real Property Only)

	Assessed Value			Taxable Values		
	Adjacent Properties (Value)	All County Properties (Value)	Adjacent Properties (Share of Total Value)	Adjacent Properties (Value)	All County Properties (Value)	Adjacent Properties (Share of Total Value)
Commercial	\$398,100	\$128,100,900	0.31%	\$371,466	\$116,708,327	0.32%
Industrial	\$13,825,400	\$56,090,600	24.65%	\$13,725,037	\$51,433,924	26.68%
Residential—improved	\$43,825,100	\$1,718,312,158	2.55%	\$34,996,248	\$1,243,646,469	2.810%
Residential—vacant	\$2,356,200	\$149,676,900	1.57%	\$1,998,024	\$97,080,151	2.06%
Other	\$0	\$256,528,560	0.00%	\$0	\$142,103,000	0.00%
Total	\$60,404,800	\$2,308,709,118	2.62%	\$51,090,775	\$1,650,971,871	3.09%

Note: Totals may not sum due to rounding. Residential categories include properties classified as waterfront residential outside of the area of analysis. These properties are not included in the adjacent properties because they are not adjacent to Croton Dam Pond or the river area under study. The “residential—improved” category includes residential condominiums. Source: Newaygo County Equalization Department, PSC analysis

PSC also conducted a hedonic analysis, which assesses the contribution of various characteristics to property values. For the purposes of this report, this analysis was designed to estimate the pond’s contribution to residential property values (Exhibit 4).

EXHIBIT 4. Hedonic Analysis Results for Assessed Value and Tax Revenue

	Number of Properties	Average Assessed Value	Net Effect on Assessed Value	Total Estimated Market Value Enhancement	Average Taxable Value	Net Effect on Taxable Value	Total Estimated Tax Revenue Enhancement
Adjacent	473	\$102,449	\$42,304	\$40,019,546	\$81,009	\$34,968	\$601,266
Two-mile buffer	1,854	\$60,145	\$0	\$0	\$46,041	\$0	\$0
Total	2,327			\$40,019,546			\$601,266

Source: Newaygo County Equalization Department, PSC analysis

Background

Consumers Energy is developing a long-term strategy for its 13 hydroelectric dams. This work is in anticipation of an upcoming relicensing decision, compounded with significant infrastructure upgrades needed to remain in compliance with the Federal Energy Regulatory Commission licensing requirements for each dam. While Consumers is handling much of the work internally, the firm engaged PSC in 2022 to assist with gathering input from the communities where the dams are located as well as more broadly across the state.

In fall 2022, PSC conducted more than 20 meetings with local officials, the public, and key stakeholders. At the meetings, PSC provided the communities with preliminary information on the process for dam removal and collected feedback to assist Consumers in developing its strategy. As part of the feedback collection process, PSC also surveyed more than 3,000 landowners with property abutting Consumers-owned land and created a website to solicit feedback and provide more context on long-term strategy development.

Consumers also engaged PSC to determine how much local economic activity can be attributed to dam-related industries. Additionally, PSC will analyze the potential economic effects associated with undertaking the dams’ decommissioning and removal in a future phase. To complete the assessments, PSC conducted interviews, collected economic data, and utilized IMPLAN. IMPLAN allows PSC to estimate the direct economic effects of pond visitor spending, as well as model supply chain purchases, worker spending, and other indirect effects. All these effects are modeled in the following three categories on an annual basis:

- **Employment:** The number of full- and part-time jobs associated with an industry.
- **Labor income:** The dollar total of employee compensation and proprietor income; the latter is associated with self-employed individuals.
- **Value-added:** The gross regional product, which includes labor income, other property income (e.g., rents and profits), and indirect business taxes (e.g., excise and sales taxes).

The analyses focus on tourism and related industries benefiting from the dams and their impoundments and model the industries' economic contributions—and levels of production—supported by the dams. The results include direct, indirect, and induced effects on employment, labor income, and economic output. For more information on IMPLAN methodology and terminology, please see Appendix A.

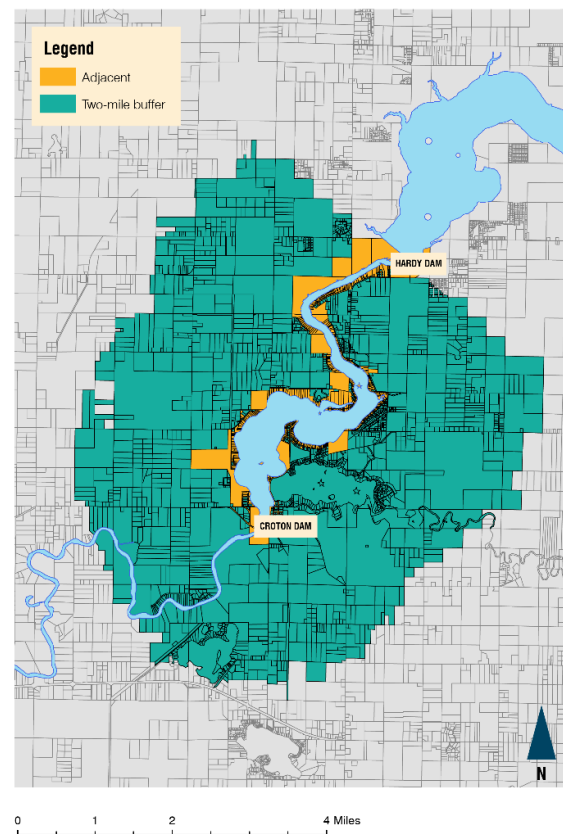
Croton Dam

Croton Dam is the southernmost of the three Consumers Energy hydroelectric dams on the Muskegon River. It is about six miles southeast of Hardy Dam, in Croton Township, Newaygo County. The township has a population of approximately 3,200 individuals. Like Rogers and Hardy Dams, Croton Dam is an earthen embankment dam. It was completed in 1907, and two additional generating units were constructed in 1915. At 700 feet long, Croton Dam is the smallest in length of Consumers' 13 hydroelectric dams. It is about 45.5 feet high, and its resulting impoundment, Croton Dam Pond, is approximately 1,209 acres. Croton Dam currently generates up to 8.85 megawatts of electricity, averaging 3.79 megawatts per day. Consumers estimates operations and maintenance costs to be a total of approximately \$5.57 million from 2023 to 2027.

Economic Contribution Analysis

PSC gathered recreational visitor data and applied national spending patterns to estimate Croton Dam Pond's economic contribution to the surrounding region (Newaygo County). To maximize research accuracy and comprehensiveness, PSC worked closely with Newaygo County, including the Parks Department, and other community stakeholders to identify existing reports and collect data on the number and types of visitors to the recreational facilities surrounding the pond. PSC's analysis estimates that parks on the pond have about 6,922 annual visiting parties to Croton Township Campground and Happy Campers, and the most recent angler survey—also called a creel survey—from the Michigan Department of Natural Resources (DNR) indicates that there are also 13,133 angler trips each year.¹ This results in this report are separate from those in the Hardy Dam economic contribution analysis, which includes spending associated with Big Bend, Brower, Davis Bridge, Hardy Dam Marina, Oxbow, Sandy Beach, Sarn's Resort, and the Newaygo County State Park.

Croton Parcel Analysis



¹ PSC estimates based on campsite occupancy using the average occupancy rates at Hardy Dam Pond campgrounds.

PSC then applied nationally recognized, inflation-adjusted recreation expenditure profiles to these trip counts to create the inputs for the IMPLAN analysis (Exhibit 5).

EXHIBIT 5. Expenditure Profiles—Spending per Trip by Party

Spending Category	Spending per Trip (Nonfishing)	Spending per Trip (Fishing)
Accommodations	\$65.24	\$14.38
Camping	\$8.66	\$1.91
Restaurant	\$52.07	\$11.48
Groceries	\$36.70	\$8.09
Gas and oil	\$32.09	\$7.07
Other transport	\$1.60	\$0.35
Entry fees	\$6.27	\$1.38
Recreation and entertainment	\$11.34	\$2.50
Sporting goods	\$8.00	\$1.76
Souvenirs and other expenses	\$10.42	\$2.30
Total	\$232.40	\$51.23

Note: Totals may not sum due to rounding.
Source: White 2017

The results of the IMPLAN analysis highlighted in Exhibit 6 indicate that the Croton Dam Pond supports 29 jobs in the region and more than \$1.27 million in value-added to the region's annual economy.

EXHIBIT 6. Economic Contributions by Type

Contribution Type	Employment	Labor Income	Value-added
Direct	25	\$568,169	\$956,226
Indirect/induced	4	\$183,925	\$309,904
Total	29	\$752,094	\$1,266,130

Note: Totals may not sum due to rounding.
Source: PSC analysis

Croton Dam Pond recreational activity contributes to over \$375,000 in total annual tax revenue, with \$264,336 at the local, county, and state level (Exhibit 7).

EXHIBIT 7. Tax Contributions

Contribution Type	Local	County	State	Federal	Total
Direct	\$61,982	\$18,571	\$144,422	\$78,664	\$303,640
Indirect/induced	\$10,269	\$3,077	\$26,015	\$32,562	\$71,923
Total	\$72,251	\$21,648	\$170,437	\$111,226	\$375,563

Source: PSC analysis

Property Value Impacts

Property values along water bodies are often assumed to be higher than nonwaterfront properties because of their scenic and recreational attributes. Due to this assumed correlation, local officials and residents have expressed concerns regarding the potential impacts on property values should the pond be altered due to dam removal or modifications. Understanding these impacts is critical for local leaders and residents. PSC has gathered property values to quantify the current value of pond and riverfront properties relative to all other properties. In addition, PSC has undertaken a hedonic analysis to model the property value differential between waterfront-adjacent properties, nearby properties, and those further beyond the Croton Dam Pond and Muskegon River.

Assessed and Taxable Values

PSC compiled assessed and taxable values from the Newaygo County Equalization Department for the tax (calendar) year 2022. Assessed values should be determined by local assessors to be 50 percent of market price or true cash value of the property. Taxable is used to determine tax liability and is always equal to or lower than assessed value. Taxable values are frequently lower than assessed values due to legislative restrictions on inflationary growth.

Exhibit 8 shows the total taxable value of properties adjacent to Croton Dam Pond and running north along the Muskegon River. Pond- and river-adjacent properties represent \$60.4 million of assessed value and \$51.09 million of taxable value. The total assessed value of adjacent properties represents 2.62 percent of total county-assessed value, and 3.09 percent of the county's taxable property.

EXHIBIT 8. Assessed and Taxable Values of Pond- and River-adjacent Properties (Real Property Only)

	Assessed Value			Taxable Values		
	Adjacent Properties (Value)	All County Properties (Value)	Adjacent Properties (Share of Total Value)	Adjacent Properties (Value)	All County Properties (Value)	Adjacent Properties (Share of Total Value)
Commercial	\$398,100	\$128,100,900	0.31%	\$371,466	\$116,708,327	0.32%
Industrial	\$13,825,400	\$56,090,600	24.65%	\$13,725,037	\$51,433,924	26.68%
Residential—improved ¹	\$43,825,100	\$1,718,312,158	2.55%	\$34,996,248	\$1,243,646,469	2.81%
Residential—vacant	\$2,356,200	\$149,676,900	1.57%	\$1,998,024	\$97,080,151	2.06%
Other	\$0	\$256,528,560	0.00%	\$0	\$142,103,000	0.00%
Total All Property Types	\$60,404,800	\$2,308,709,118	2.62%	\$51,090,775	\$1,650,971,871	3.09%

Note: Totals may not sum due to rounding. Residential categories include properties classified as waterfront residential outside of the area of analysis. These properties are not included in the adjacent properties categories as they are not adjacent to Croton Dam Pond or the river area under study.

Source: Newaygo County Equalization Department, PSC analysis

¹ This category includes residential condominiums.

Exhibit 9 shows the taxable value for the townships in which the pond- and river-adjacent properties exist. Big Prairie Township properties along the pond and river total \$16.57 million in taxable values, which represents 23.18 percent of total township taxable value. Nearly all the properties are residential—improved, which total \$6.13 million in taxable value. Pond- and river-adjacent properties in Croton Township have a taxable value of \$34.52 million, which comprises 22.14 percent of total township taxable value. As in Big Prairie Township, nearly all the adjacent properties are residential—improved. These properties have a total taxable value of \$28.87 million.

EXHIBIT 9. Taxable Values of Pond- and River-adjacent Properties (Real Property Only), By Township

	Total All Property Types	Commercial	Industrial	Residential— Improved*	Residential —Vacant	Other
Big Prairie Township						
Pond and river adjacent	\$16,571,946	\$163,214	\$10,031,250	\$6,128,267	\$249,215	\$0
All township properties	\$71,494,369	\$1,633,225	\$10,869,929	\$52,718,483	\$6,272,732	\$0
Percentage value adjacent	23.18%	9.99%	92.28%	11.62%	3.97%	0.00%
Croton Township						
Pond and river adjacent	\$34,518,829	\$208,252	\$3,693,787	\$28,867,981	\$1,748,809	\$0
All township properties	\$155,917,150	\$2,871,958	\$3,792,361	\$139,117,783	\$9,936,066	\$198,982
Percentage value adjacent	22.14%	7.25%	97.40%	20.75%	17.60%	0.00%

Note: Residential categories include properties classified as waterfront residential outside of the area of analysis. These properties are not included in the adjacent properties categories as they are not adjacent to Croton Dam Pond or the river area under study.
Source: Newaygo County Equalization Department, PSC analysis

Hedonic Analysis

A hedonic analysis model provides estimates of the pond’s contribution to residential property values. The analysis is used to determine how proximity to the dam’s pond is reflected in average residential property values. As property taxes are levied, the estimates have implications on expected contributions to local area tax revenue.

In the hedonic analysis, properties are assigned as either adjacent to the impoundment or within two miles of the impoundment shoreline. As shown in the map on page eight, this analysis only includes properties south of the Hardy Dam. Properties north of the Hardy Dam are included in the economic contribution analysis of that hydroelectric facility. The anticipation is that if the impoundment provides amenity value to homeowners, adjacent lots will exhibit a price premium over comparative lots not adjacent to Croton Dam Pond. The comparison, or baseline, properties were limited to those within two miles of the impoundment so as to create a basis for comparison that shares close geographic proximity to the properties in question to reflect the values the community place on residential properties.

The hedonic analysis uses assessed values to provide estimates of the impoundment’s contribution to property wealth in the surrounding community and taxable value. Taxable value, along with the 2022 township-level millage rate and properties’ designation as homestead or nonhomestead, determines the impoundment’s impact on the overall estimated tax revenue contribution.

Exhibit 10 shows the resulting hedonic analysis estimates of homeowner value generated by proximity to Croton Dam Pond. Holding all other factors constant, the 473 properties that share property lines with the impoundment have averaged assessed values of \$102,449, compared to peer properties in the baseline group with \$60,145. That is, the assessed value of adjacent properties is \$42,304 higher on average.

Multiplying the net effect of lakefront properties to the lake by the number of properties and a multiplier of two provides the impoundment’s expected contribution to regional property values. In total, the region benefits in property values that are approximately \$40.02 million higher than would be expected in the impoundment’s absence. This represents less than 1 percent of all assessed value within Newaygo County.

EXHIBIT 10. Hedonic Analysis Results for Assessed Value

	Number of Properties	Average Assessed Value	Net Effect on Assessed Value	Total Estimated Market Value Enhancement
Adjacent	473	\$102,449	\$42,304	\$40,019,546
Baseline	1,854	\$60,145	\$0	\$0
Total Value	2,327			\$40,019,546

Source: Newaygo County Equalization Department, PSC analysis

The residential properties in this analysis largely exist in Croton Township, within the Newaygo School District. Accordingly, the effective residential millage rates are 28.633 for homestead properties and 46.1134 for nonhomestead properties (Michigan Department of Treasury n.d.b). Exhibit 11 shows the estimated taxable value contributions of proximity to the impoundment. The estimated taxable values differ slightly from the assessed values reflecting the impact of the Headlee Amendment. Of the 472 parcels adjacent to the impoundment, 259 were homestead, while 213 were nonhomestead. One parcel was listed as a mix of homestead and secondary home. The proportion of properties that are nonhomestead was greater for adjacent properties than for those within the two-mile band. By applying the appropriate millage rate by taxable status and summing over all properties for each of the proximity categories, PSC estimated the net tax revenue contribution of proximity to the impoundments is approximately \$601,266.²

EXHIBIT 11. Hedonic Analysis Results for Tax Revenue

	Number of Properties	Average Taxable Value	Net Effect on Taxable Value	Total Estimated Tax Revenue Enhancement
Adjacent properties	473	\$81,009	\$34,968	\$601,266
Baseline	1,854	\$46,041	\$0	\$0
Total Value	2,327			\$601,266

Source: Mecosta County Equalization Department, PSC analysis

Dam Removal Scenarios

PSC’s analysis is a current-state assessment of the dam’s economic contributions—a summary of today’s economic value as the pond and river are currently configured. PSC’s initial study did not consider how the economic contributions may shift under dam removal/modification scenarios. PSC will evaluate those scenarios in a phase two study using a conceptual decommissioning scenario. This analysis will require certain details about the pond and river changes to determine what corresponding economic impacts may result.

² All partial homestead properties were assigned a midpoint millage rate between homestead and nonhomestead rates.

Conclusion

Local recreational assets are the primary economic activity around Croton Dam Pond. These assets generate visitor activity resulting in employment opportunities, tax revenue, and economic contributions to the broader economy. On an annual basis, the Croton Dam Pond recreational and business assets contribute:

- More than \$1.27 million in gross regional product and support 29 jobs
- More than \$375,000 in local, county, state, and federal taxes through direct, indirect, and induced tax effects from recreational and related spending

The presence of the pond and river also positively impact adjoining property values, contributing:

- An additional \$40 million in market value to adjacent and nearby properties
- An additional \$601,266 in local and state property tax revenue due to the increased market value

References

- Bureau of Labor Statistics (BLS). 2021. *Table 1300. Age of Reference Person: Annual Expenditure Means, Shares, Standard Errors, and Coefficients of Variation, Consumer Expenditure Surveys, 2021*. Accessed February 20, 2023. <https://www.bls.gov/cex/tables/calendar-year/mean-item-share-average-standard-error/reference-person-age-ranges-2021.pdf>
- Coughlin, Cletus, and Thomas Mandelbaum. January 1991. "A Consumer's Guide to Regional Economic Multipliers." *Federal Reserve Bank of St. Louis Review* 73: 19–32. Accessed February 20, 2023. https://files.stlouisfed.org/files/htdocs/publications/review/91/01/Consumer_Jan_Feb1991.pdf
- Michigan Department of Treasury. n.d.a. "State Equalization e-filing System." *Michigan Department of Treasury*. Accessed February 24, 2023. <https://eequal.bsasoftware.com/Login.aspx>
- . n.d.b. *2021 Total Property Tax Rates in Michigan*. Lansing: Michigan Department of Treasury. Accessed February 25, 2023. https://www.michigan.gov/treasury/-/media/Project/Websites/taxes/2022RM/PROPERTY2/2021_TOTAL_RATES_Report.pdf?rev=528122bd8be94aefabdcfb57c6bdf1dd&hash=69503DB118198847ED855098D6EC68D1
- Monson, Matt. July 1, 2009. "Valuation Using Hedonic Pricing Models." *Cornell Real Estate Review* 7: 62–72. Accessed February 20, 2023. https://ecommons.cornell.edu/bitstream/handle/1813/70656/2009_62_73_Monson.pdf?sequence=1&isAllowed=y
- Newaygo County Equalization Department. Unpublished data table, last modified January 6, 2023. "Parcels_NewaygoCounty_2023JAN06." DBF file.
- O'Neal, Richard, and Tracy Kolb. 2014. *2007 Croton Impoundment Angler Survey Report*. Lansing: Michigan Department of Natural Resources, Fisheries Division. Accessed March 6, 2023. <https://www.michigan.gov/dnr/-/media/Project/Websites/dnr/Documents/Fisheries/Creel/CrotonImpoundment-2007.pdf?rev=9c26ccob7b9246f2bfd6dd678943e27f&hash=D7BF7444ECBD1D2BA301C379E70BD536>
- White, Eric. 2017. *Spending Patterns of Outdoor Recreation Visitors to National Forests*. Corvallis: U.S. Department of Agriculture, Forest Service, Pacific Northwest Research Station. Accessed March 6, 2023. <https://www.fs.usda.gov/pnw/publications/spending-patterns-outdoor-recreation-visitors-national-forests>

Appendix A. Methodology

IMPLAN Modeling

To analyze the amount of money visitors and residents spend on recreation related to the dam impoundments, Public Sector Consultants used IMPact for PLANning (IMPLAN), an input-output model to estimate economic impacts and contributions. It is a staple for regional economic analysts.

Economic Impact and Contribution Analyses

There are two major frameworks for input-output simulations. The first is an economic impact analysis, which examines the effect of something that affects the economy—like changes in wages or jobs—in a specific area. In this case, it is the dam impoundment and the recreational activities and expenditures associated with it. Because an economic impact analysis provides a model of what the economy is like with the economic feature being examined—in this case, the dam impoundment—a full accounting of what the economy would be like without the feature is required in modeling the outcomes.

The second framework is called an economic contribution analysis. This framework doesn't take the possible absence of an economic feature into consideration. It only models the value of economic activity that can trace its source back to the existence of the economic feature being modeled.

IMPLAN Terminology and Methodology

Input-output models trace transactions among and between different economic sectors (like households, businesses, and governments) over the course of a year. Tracing these transactions offers a clearer picture of how a change in economic activity in one part of the economy creates changes in other parts of the economy. When a business sells from inventory, it takes a portion of those earnings to pay for other goods and services (for example, to restock its inventory). Some of the wages companies pay to employees will go to local retailers and service providers, continuing the ripple effect throughout the economy. Because of all of these additional transactions, the overall economic effect is greater than the value of all the different direct revenue streams (employer to employee, consumer to business, business to business, etc.), which is called the multiplier effect. The existence of multiplier effects in regional and national economies is well documented in economics literature (Coughlin and Mandelbaum 1991).

Direct Effects

The standard approach to modeling economic impacts with input-output models is to begin by establishing the value of transactions that represent direct expenditures related to the dam and impoundment. For the purposes of this study, these are expenditures by individuals utilizing impoundment, feeder river system, and other adjacent recreational facilities. The direct effects of this spending are organized into various commodity categories. Each commodity type, such as grocery retailing, gasoline, and restaurant meals, have unique economic profiles in the local economy. For example, purchases made at a local grocery store create a different set of secondary transactions than purchases made in other industries.

While recreational expenditures make up the direct effects, they are largely derived from the number of recreational users at facilities around the impoundment. As discussed above, the analysis assumes that these users will spend money in a particular pattern while visiting recreational assets in and around the

dam impoundment. The expenditure profile used for this analysis is an inflation-adjusted version of the one adopted by the United States Department of Agriculture and United States Forest Service (USDA/USFS)(White 2017). Expenditures by recreational users are measured on a per-party basis. To account for the different spending patterns of impound visitor types, party counts were broken out into distinct categories:

- Campground and park visitors (including day, overnight, and season pass visitors)
- Anglers
- Seasonal campers

Campground and Park Visitors

Distinguishing between overnight and day-visitor counts is not always possible, so PSC used a single expenditure profile for both, which is an average of the overnight party and day-trip party expenditures. Counts of day and overnight trips were provided by respective campgrounds, parks, and marinas. These counts are typically derived from entry fees, but when that data was not available, counts were extrapolated from figures at similar sites, measuring cell phone pings within a geofenced area around park boundaries, or using professional estimates from facility management. Facilities issuing seasonal passes cannot account for the number of times the seasonal pass was used for entry. In such cases, assumptions about the number of trips per season and the length of the season were used to produce projected party trips for these visitors.

Anglers

Fishing party counts were provided by the Michigan Department of Natural Resources and creel surveys of fishing activities by location (O'Neal and Kolb 2014). The surveys also entailed fishing day expenditure totals, which were adjusted for inflation and aligned with the distribution of spending exhibited by campground and park users.

Seasonal Campers

Seasonal campers are those that reserve a spot for the entire summer season at a campground. Camping rates for individual sites were used in the seasonal camper expenditure profile and when necessary, PSC averaged the costs of various site types to produce a single lodging amount of the season. For other spending categories, PSC developed professional estimates using information from the USDA/USFS report, as well as monthly spending averages for individuals over the age of 65 produced by the Bureau of Labor Statistics (BLS 2021).

Indirect and Induced Effects

These direct effects are then used to estimate the secondary transactions that happen because of the direct effects. The first set of secondary transactions is the indirect effects, which are transactions between business sectors. Indirect effects are the intermediate purchases of goods from one business by another (such as restocking). A business's operational costs—like electricity, rent, and business services—are also indirect effects. Indirect effects ripple throughout the economy as businesses purchase goods and services from other businesses. These transactions cascade throughout the region, reduced only by the extent that inputs are purchased from suppliers outside the region. The second set of secondary transactions are called induced effects. Induced effects measure the value of new transactions by households, governments, and other institutions in response to higher labor income, taxes, and profits. These household and institutional expenditures from earnings generate new rounds of business-to-business

transactions and associated payments to institutions. These expenditures continue throughout the regional economy, hampered only by the extent to which purchases are made for goods, services, and payments to institutions outside the local economy. The direct, indirect, and induced effects are summed together to calculate the total economic effects.

Contribution estimates start with the estimated total value of purchases by category. Standard input-output models examine the economy through the flow of transactions. However, figures for employment, labor income, and total regional income, which are also known as contributions to gross state product, are determined with fixed ratios to the value of sales transactions. For instance, if Industry X employs one employee for every \$1 million in sales, then an increase in sales by \$10 million translates into an increase in employment by ten workers. Similar fixed ratios for labor income and gross state product apply. The IMPLAN model provides 544 expenditure categories, and 11 household types by income group.

Hedonic Analysis

If a dam impoundment is an amenity that adds value to surrounding properties, people will be willing to pay more for a property near the impoundment than they would for a property not near the impoundment. Alternatively, if a dam impoundment is detrimental, people will want to pay less for a property near the impoundment than they would for a property not near the impoundment. The actual value that an amenity adds to a property can overlap with other property attributes, so that determining how much the amenity contributes to a property's value is difficult without a detailed case-by-case analysis of individual properties.

To address this problem, economists created a model approach called hedonic analysis to statistically control for other factors that contribute to property values. Researchers compare the values of properties near the amenity to properties not near the amenity when holding all other factors constant. For example, because there is limited lake-adjacent property, developers usually restrict the lot size of waterfront properties. Because smaller lots are generally considered less desirable than larger lots, holding all other factors constant, waterfront properties should cost less than larger lots away from the water.

If an analysis compares the market value of waterfront lots to the value of lots away from the water without considering the smaller waterfront lot sizes, the analysis will underestimate the value the amenity brings to adjacent properties. Once the analysis acknowledges that smaller lot sizes along the water should suppress waterfront property values, the true relationship between prices and proximity to the water is revealed. Other factors apply, and once accounting for all relevant factors that explain market values, the remaining difference between the expected value and the actual value is then statistically determined as the overall average realized property premiums of properties in proximity to the body of water relative to baseline properties distant from the water (Monson 2009).

For this study, the model limits the impoundment's influence on those properties immediately adjacent to the impoundment. This is a conservative restriction on the expected influence the impoundment has on property values and property tax revenues. The comparison group of properties are lots in a two-mile band around the impoundment to ensure common markets with those properties bordering the impoundment.

There are two measures of residential property values: assessed and taxable values. Property information was provided by the county assessor offices and followed a common construct. The property variables are

lot size and dimensions, address, owner's home mailing address and zip code, city/township jurisdiction, school district, property type, and taxable status. The importance or weight of each factor on the overall assessed value is determined statistically by the hedonic model. The analysis used these variables, including values derived from them, to determine the factors that contribute to the properties' overall assessed and taxable values.

Other factors not represented in the analysis may also contribute to a property's overall value. Typically, there is a fair amount of variation in these other factors—like structure type, size, number of rooms, and presence of a garage—such that excluding them from the analysis is not expected to result in systematic bias in the estimated values.

GIS mapping software was applied to spatially determine lot locations relative to dam impoundments. Adjacent properties are those sharing a border with the impoundment. Comparison properties, up to two miles away, were determined based on the nearest geographic distance of the property centroid to the impoundment edge. Taxing status was both used as a variable to determine property value and to calculate the net expected tax contributions of properties adjacent to the impoundment.

All the comparisons were made on expected values, controlling for other factors. To control for the possibility that any estimated price differences between properties and types of properties was not due to random chance, testing for statistical significance in property price differences was done but is not reported in the narrative. Once significance is established, the average differential can be applied across all corresponding residential properties to derive an overall estimate of the residential property values and property tax revenues that can be attributed to the impoundment.

Appendix B. Organizational Contacts

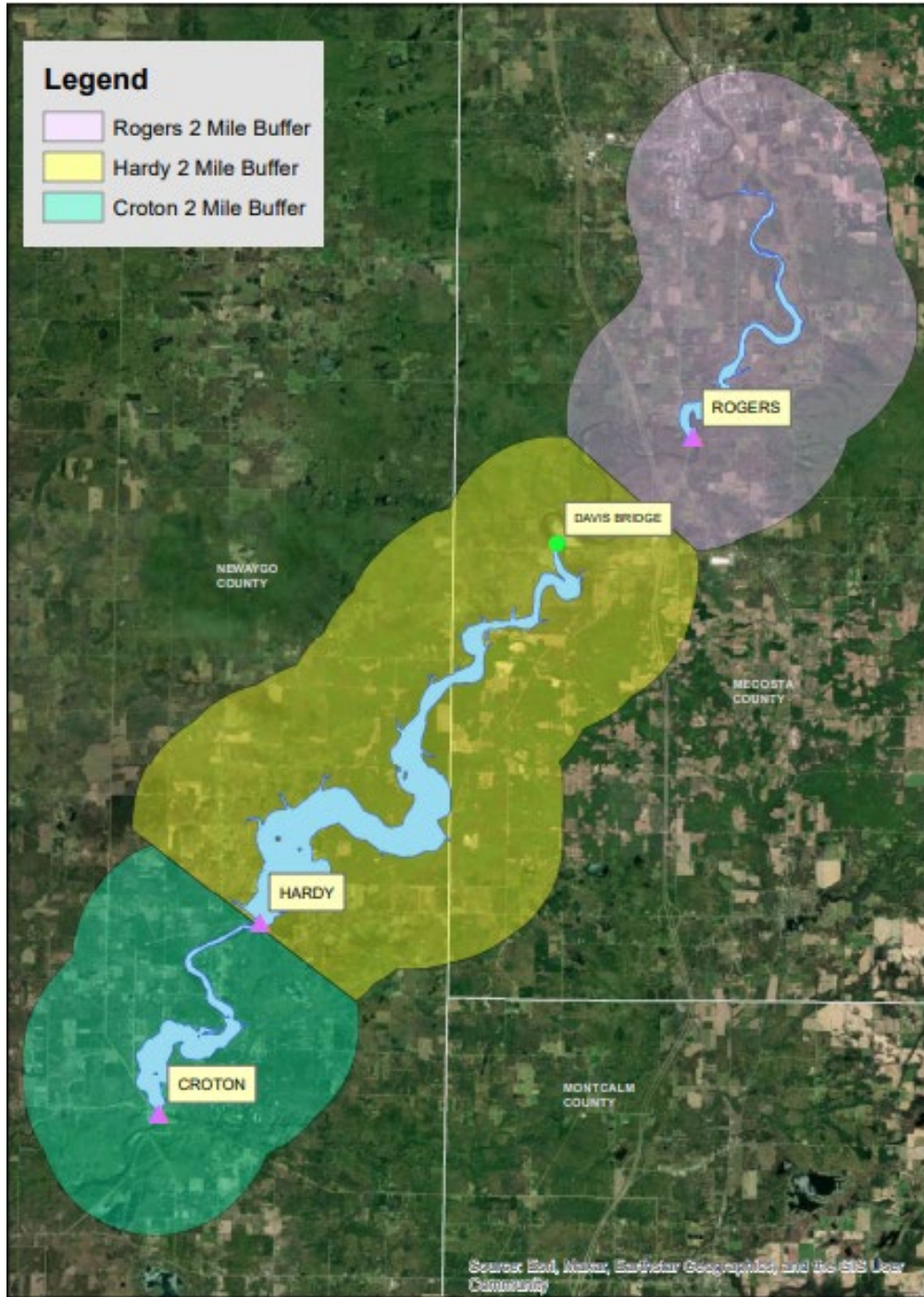
As part of this study, PSC reached out to the following organizations to discuss recreational, industrial, and housing assets and data. While not all these organizations responded, many followed up and spoke with PSC via email, phone, and virtual meetings.

EXHIBIT B1. Organizational Contacts—Croton

Organization	Outreach Date
Other local campground proprietors	February 2023
Michigan Association of Counties	January 2023
Michigan Department of Natural Resources	January 2023
Newaygo County Administration	January 2023
Newaygo County Equalization Department	January 2023
Newaygo County Parks and Recreation	January 2023
River Country Chamber of Commerce of Newaygo County	January 2023
The Right Place (Newaygo County Economic Development Partnership)	January 2023

Appendix C. Map of Croton, Hardy, and Rogers Dams

EXHIBIT C1. Adjacent and Buffer Parcels Around Croton, Hardy, and Rogers Dams



Source: Newaygo County Equalization Department; PSC analysis



**PUBLIC SECTOR
CONSULTANTS**

230 N. Washington Square
Suite 300
Lansing, MI 48933